



Deutsche Sprachressourcen Infrastruktur (D-SPIN) **Infrastructure for German Language Resources**

Prof. Dr. Erhard Hinrichs
University of Tübingen
D-SPIN Coordinator



European Strategy Forum
on Research Infrastructures

„The ESFRI Roadmap identifies new Research Infrastructure (RI) of pan-European interest corresponding to the long term needs of the European research communities, covering all scientific areas, regardless of possible location.“



Preparatory Phase (2008-2010)

- **Co-financing by the EU and by national funding bodies (for Germany: BMBF)**

Construction Phase and Operational Phase (2011-2020)

- **Primary financing with national funds**
- **Phase I (2011-2015)**
- **Phase 2 (2016-2020)**



In the area of Humanities and Social Sciences:

CLARIN (Common LAnguage Resources and Technology INfrastructure); www.clarin.eu

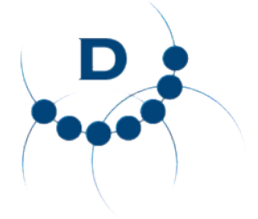
DARIAH (DigitAl Research Infrastructure for the Arts and Humanities); www.dariah.eu

CESSDA (Council of European Social Science Data Archives); www.nsd.uib.no/cessda

Related European Projects

D-SPIN

CLARIN



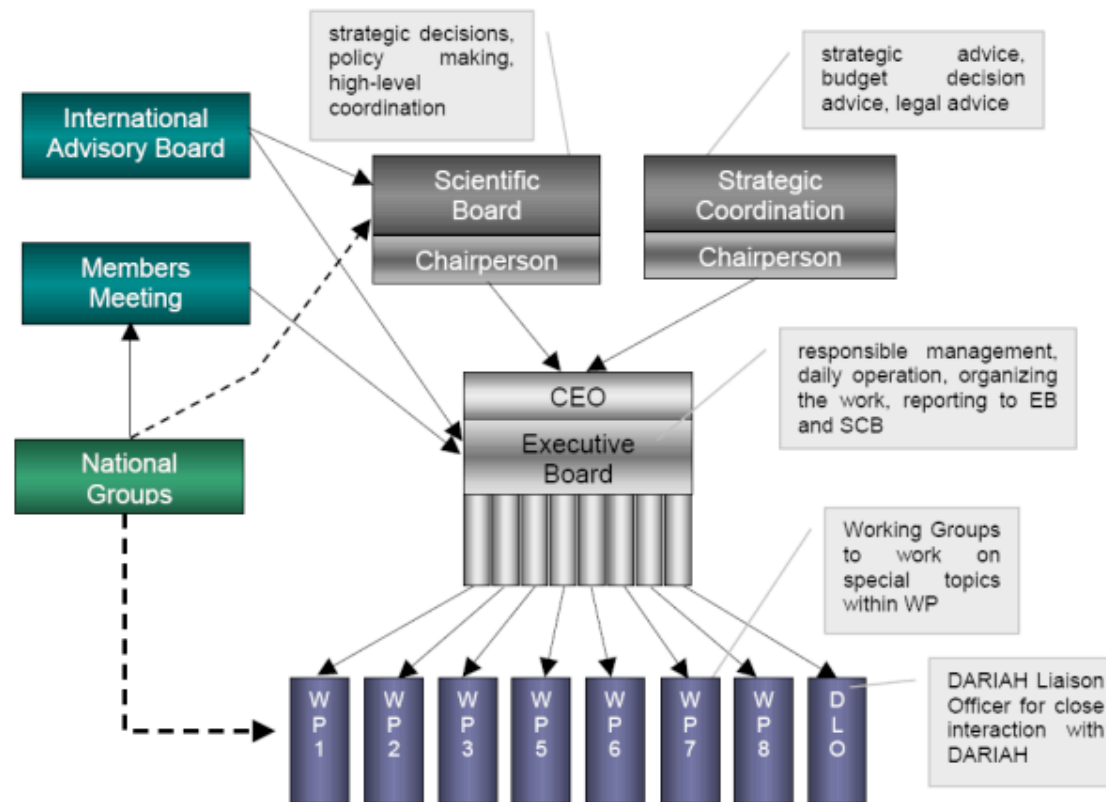
DRIVER (Digital Repository Infrastructure Vision for European Research); www.driver-repository.eu

EGEE (Enabling Grids for E-sciencE); <http://public.eu-egee.org>

Europeana; www.europeana.eu



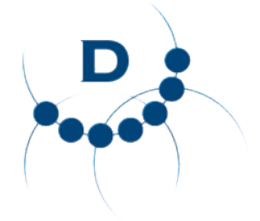
Total number of members: 151
 Number of countries involved: 32



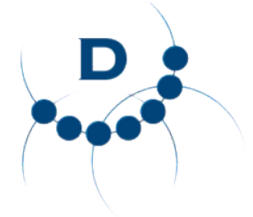
(dashed lines indicate that in general members of the SB and working groups will be recruited from the national CLARIN groups)



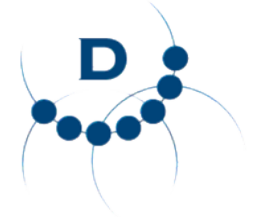
- Berlin-Brandenburgische Akademie der Wissenschaften
- Deutsches Forschungszentrum für Künstliche Intelligenz Saarbrücken GmbH (DFKI)
- Institut für Deutsche Sprache (IDS) Mannheim
- Max-Planck-Institut für Psycholinguistik Nijmegen
- Eberhard-Karls Universität Tübingen; Computerlinguistik
- Goethe-Universität Frankfurt; Vergl. Sprachwissenschaft
- Justus-Liebig-Universität Gießen; Ang. Sprachw. und CL
- Universität Leipzig, Institut für Informatik
- Universität Stuttgart, Inst. für masch. Sprachverarbeitung



What's the relationship between D-SPIN and CLARIN?



- **WP 1: Project management** (Uni Tübingen, MPI Nijmegen, IDS Mannheim, BBAW Berlin)
- **WP 2: Establishment of the technical infrastructure** (MPI Nijmegen, Uni Tübingen, IDS Mannheim, BBAW Berlin, Uni Leipzig, Uni Frankfurt, DFKI Saarbrücken, Uni Stuttgart)
- **WP 3: Assessing user needs: LRT services for Humanities researchers** (BBAW Berlin, Uni Frankfurt, Uni Gießen)
- **WP 4: Liaisons with national and European initiatives** (MPI Nijmegen, Uni Tübingen)



- **WP 5: Adaption and integration of resources and tools** (Uni Tübingen, MPI Nijmegen, IDS Mannheim, BBAW Berlin, Uni Leipzig, Uni Frankfurt, DFKI Saarbrücken, Uni Stuttgart)
- **WP 6: Training and education** (Uni Gießen, Uni Tübingen, Uni Frankfurt)
- **WP 7: Copyright and ethical questions in the usage of language resources; license models** (IDS Mannheim)
- **WP 8: Elaboration of an organisational structure for the sustainability on a national level** (IDS Mannheim)



- Coordination of D-SPIN activities (e.g. D-SPIN website, D-SPIN wiki, collaboration agreement, scheduling of workshops)
- Organisation of meetings of the D-SPIN Management Board, of the D-SPIN Scientific Advisory Board and coordination of work package activities
- Coordination with the Funding Agency (BMBF, DLR) and with other infrastructure projects (e.g. CLARIN, DARIAH, FLaReNet (EU projects); eAQUA, TextGrid (BMBF projects); Dobes (Volkswagen Foundation))



Deutsche Sprachressourcen-Infrastruktur D-SPIN



D-SPIN ist der deutsche Beitrag zum europäischen [CLARIN-Projekt](#) (Common Language Resources and Technology Infrastructure).



Das Projekt D-SPIN schafft die Grundlagen für eine stabile und nachhaltige Infrastruktur von Sprachressourcen und Sprachtechnologien. Diese soll in erster Linie der empirischen geistes- und sozialwissenschaftlichen Forschung dienen.

Laufende Umfragen

Sie sind eingeladen sich zu beteiligen: Laufende Umfrage zu "Nutzungsszenarien einer Sprachressourcen-Infrastruktur" des D-SPIN Arbeitspakets 6: *Training und Ausbildung* - [zur Umfrage](#) - [zum Arbeitspaket](#)



Purpose: Getting the German community of LRT developers and LRT users involved in D-SPIN and CLARIN

- Venue: IDS, Mannheim, May 15-16 2009
- Invitations issued to 66 researchers
- Participation: 65 registered participants
- Boosted CLARIN membership from 12 to 24 registered institutions from Germany
- Resulted in a Call for Curation Projects and Demo Cases



- Purpose: possible Use Cases as part of follow-up funding
- 18 Use Cases were submitted for different humanities disciplines, e.g.
 - History of Philosophy: Integration of the Collected Works of Emmanuel Kant (Bonner Kant-Korpus) in the D-SPIN/CLARIN RI
 - Japanese Studies: Integration of a Japanese-German dictionary with monolingual lexical resources in the D-SPIN/CLARIN RI



- Political Science: Lexico-statistical profiling of legal documents concerning anti-terrorism legislature
- Phonetics: Easy web-based access to high-profile speech segmentation and alignment service
- Language Pedagogy: Enhancing language skills by web-based access to lexical resources

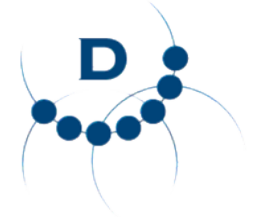


- Purpose: Future planning for an integrated E-Humanities Infrastructure
- Initiated by the Volkswagen Foundation and launched in April 2009
- Members: Gerhard Heyer (eAQUA), Erhard Hinrichs (D-SPIN), Gerhard Lauer (DFG-Initiative), Heike Neuroth (DARIAH), and Peter Wittenburg (CLARIN)



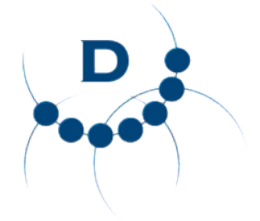
October 17

- 14.15-14.45 Erhard Hinrichs: D-SPIN and CLARIN: an overview
- 14.45-15.30 Peter Wittenburg: Service centers as backbone of a D-SPIN infrastructure
- 15.30-16.15 Alexander Geyken: The user perspective: The infrastructure needs of Humanities scholars
- 16.45-16.45 Coffee Break
- 16.45-18.00 Erhard Hinrichs, Ulrich Heid, Thomas Zastrow: D-SPIN web services
- 20.00 Dinner



October 18

- 9.00-9.45 Marc Kupietz: Legal and ethical questions
- 9.45-10.30 Jost Gippert, Henning Lobin: Educational aspects: teaching materials and D-SPIN summer school
- 10.30-11.30 Internal meeting of the D-SPIN Scientific Advisory Board
- 11.30-12.30 Feedback by the D-SPIN Scientific Advisory Board



Thank you for your attention!